

Manual test pump

Hand Test Pump TP50E

NEW

Code No. **TP50E**

Maximum Pressure :
50kgf/cm² (711.2psi)

Hydrostatic Pressure

Manual

Steady crimpings assure accurate tests without leakage from the hose connection.
ASADA original unique tank.
Light weight but sturdy body by Polypropylene.



ø75mm pressure gauge

ø75mm pressure gauge.
※ Single pressure gauge is also available. (Code No.TP563)



Air Bleed Valve

Easily accessible valve for bleeding air.

Discharge water volume	16ml/one stroke
Tank capacity	3.0L
Weight	3.3kg
Length of hose	1m
Exhalation	BSPT 1/4"
Standard Accessories	Nipple R1/2" (PT1/2") × G1/4" (PF1/4")
Quantity	4



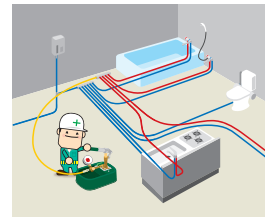
ø100mm pressure gauge

Code No.	pressure	connection size
TP039	0 ~ 25kgf/cm ²	3/8"
TP038	0 ~ 40kgf/cm ²	

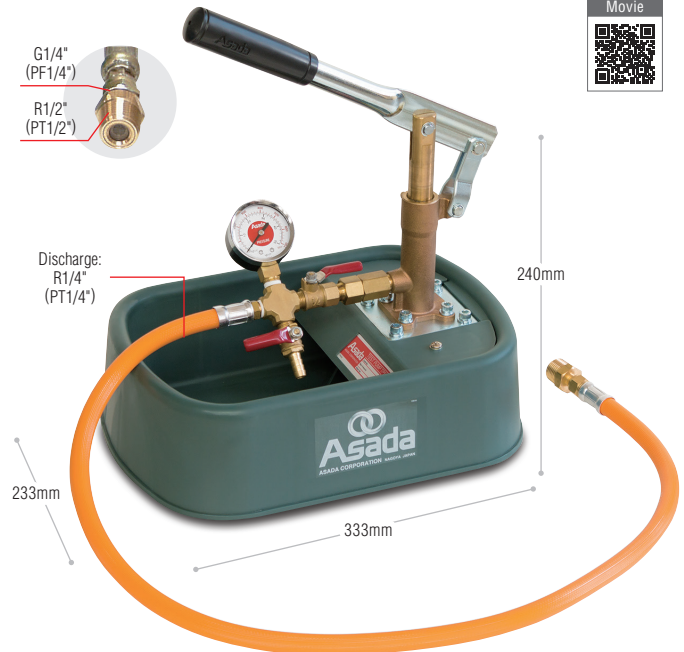
※ For connecting directly to the machine. Code No.EP257
EP1 bush 3/8" × 1/4" is necessary.

Pressure Gauge Unit

Code No.	Connection size
TP041	Pipe : 1/2" Pump : 1/4"



ECONOMICAL, STURDY& COMPACT MODEL IS AVAILABLE!!
Ideal model for leak test of various pipes, tanks, valves, and joints !



Manual + Electric test pump

Hybrid Test Pump TP50B

Code No. **TP50BE**

Maximum Pressure :
40kgf/cm² (568.9psi)

Hydrostatic Pressure

Manual + Electric Hybrid Model

Quick water supply priming by using a cordless screwdriver or drill to turn the pump at high speed.
Easily viewed 4MPa pressure gauge.
Efficient working by a large sized tank (10.5L).
High pressure hose rated to maximum pressure of 230kgf/cm².



Supply

Quick water supply priming by using a cordless screwdriver or drill to turn the pump at high speed.



Pressurization

Possible until 50kgf/cm² by hands.

Discharge water volume	By gear pump : 3.5L/min By hand : 16ml/each time
Tank capacity	10.5L
Weight	5.5kg
Length of hose	1m
Standard Accessories	Nipple with a suction filter R1/2" (PT1/2") × PF1/4", Hex bit

※ Capacity of gear pump is when it moves 1,100min⁻¹.
※ Gear pump works only for initial supply of water (charging).
※ The maximum pressure by a screwdriver is 2Kgf/cm².



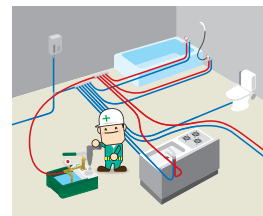
ø100mm pressure gauge

Code No.	pressure	connection size
TP039	0 ~ 25kgf/cm ²	3/8"
TP038	0 ~ 40kgf/cm ²	

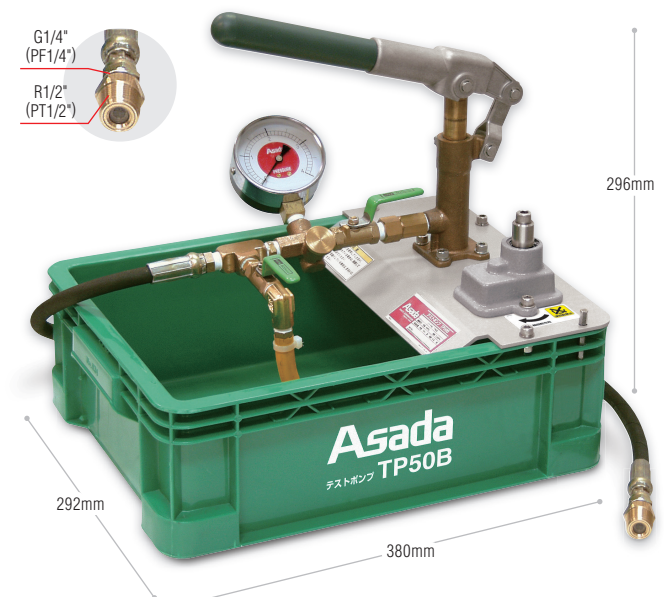
※ For connecting directly to the machine. Code No.EP257
EP1 bush 3/8" × 1/4" is necessary.

Pressure Gauge Unit

Code No.	Connection size
TP041	Pipe : 1/2" Pump : 1/4"



High speed water supply using cordless screwdriver or drill to charge lines !
BIG VOLUME 10.5L TANK !



Electric Test Pump

Electric Test Pump EP440

220V : Code No. **EP013**

240V : Code No. **EP014**

Maximum Pressure :
40kgf/cm² (568.9psi)

Hydrostatic Pressure

Self-Priming

Over-load protection

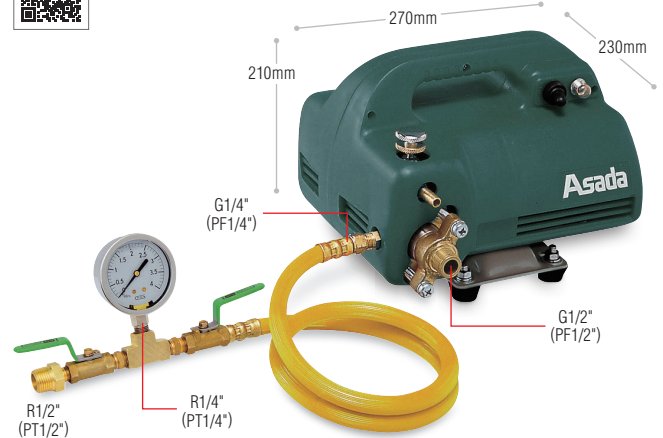
Optional Item
Direct connect hose to water tap

Small and light - 9kg.

Pump water also from water tap using an optional hose.

Maximum pressure	3.92MPa (40kgf/cm ²)
Discharge water volume	3.0L / min (50Hz) • 3.7L / min (60Hz)
Motor	220V • 200W ※ voltage made to order
Weight	9kg
Standard Accessories	Pressure gauge unit, High pressure hose 1m, Suction hose 2.6m, Filter, Relief hose 3m, 2 wrenches, Case

IDEAL MODEL FOR LEAK TEST OF VARIOUS PIPES, TANKS, VALVES, AND JOINTS



EP1 Pressure Gauge



Code No. **EP163**

Item	Code No.	Note
Test pump kit (※1)	EP101	pressure unit + High pressure hose 1m
Pressure gauge unit	EP105	_____
Spray gun kit (※2)	EP201	spray gun + high pressure hose 8m
Spray gun	EP430	_____
Hose for direct connect	EP252	length : 3m

※1 : Kit which converts the high pressure cleaner 440 to electric test pump.
※3 : Use as a combination of the pressure gauge and the gauge unit.

Item	Code No.	Note
High pressure hose 1m	EP160	_____
High pressure hose 8m	EP450	can be extended
ø100mm pressure gauge with glycerin (※3)	2.5MPa EP383 4MPa EP384	connection size : 3/8"
Gauge unit (※3)	TP041	connection size pipe : 1/2" pump : 1/4"

※2 : Kit which converts the EP440 to high pressure cleaner.

Pulsation Test Pump

Pulsation Test Pump MP30

Code No. **MP300**

Maximum Pressure :
25.5kgf/cm² (362.7psi)

Hydrostatic Pressure

Self-Priming

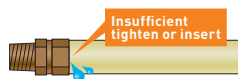
Over-load protection

Optional Item
Direct connect hose to water tap

The pressure goes up and down repeatedly like a vibration and the pulsation makes it easier to find even a small leakage by a stabbed nail.

Both the pump and pulsation unit are of compact design

Vibration-resistant gauge filled with glycerin



FOR MORE STRICT LEAKAGE INSPECTION!

It is easier to find leaks by using pulsating pressure!

Maximum pressure	For Spring Water : 25.5kgf/cm ² , 362.7psi For Pulsation : 20.4kgf/cm ² , 290.1psi
Discharge water volume	3.0L / min (50Hz) • 3.7L / min (60Hz)
Motor	100V • 200W ※ voltage made to order
Weight	12.7kg
Standard Accessories	High Pressure Hose(1m), Suction Hose(2.6m), Relief Hose(2.6m), Filter, Pressure Gauge Kit, Case



EP1 Pressure Gauge

Code No. **EP252**

Water tap direct connection hose

Code No. **EP163**

